



TABURETT Stool / Barstool
Design: Edvin Ståhl, 1955, reissued by Lammhults 2015

LAMMHULTS



A FAITHFUL REPRISE

Taburett is a welcome reissue of one of Lammhults' earliest products, the 282 stool, designed by Lammhults founder Edvin Ståhl. A true industrial masterpiece, Taburett wears its modernist mantle well, closely following the Modern Movement rule that "structure and function are revealed simultaneously".

Taburett is a stackable stool but also a barstool in two heights. The seat comes in ABS plastic, in standard colours light beige, grey, black, grey green, blue, orange, yellow brown & yellow and upholstered seat as alternative. The seat has a round embossed seat detail, with an "L" as in Lammhults, of powder coated or chromium plated die-cast zink. The frame comes in powder coated or chromium plated steel tubing





STOOL SH46



BARSTOOL SH63



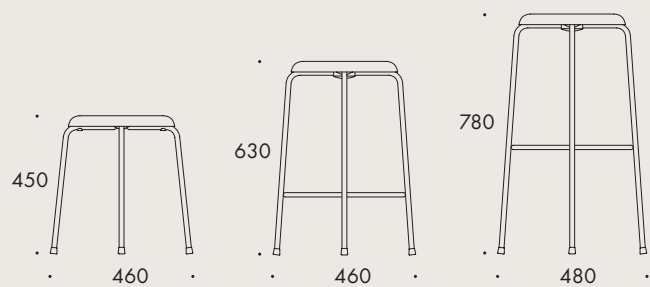
BARSTOOL SH78



SPECIFICATIONS

STOOL / BARSTOOL

Frame of 16 mm chromium plated or powder coated steel tubing. Seat of standard colours light beige, grey, black, grey green, blue, orange, yellow brown & yellow. ABS plastic alt. upholstered. Embossed seat detail of powder coated or chromium plated die-cast zinc. The stool is stackable.



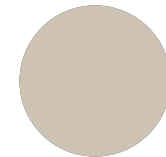
WEIGHT

Stool	1.9 kg
Barstool	3.4/3.7 kg

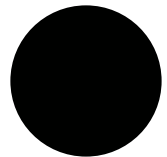


COLORS
SEAT

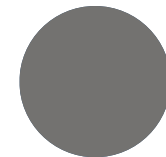
OPTIONS



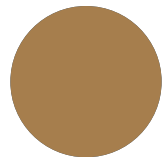
Light beige



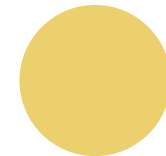
Black



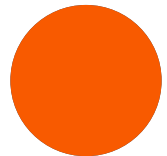
Grey



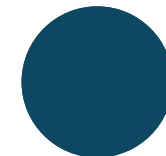
Yellow brown



Yellow



Orange



Blue



Green grey



LAMMHULTS



LAMMHULTS

Lammhults Möbel AB

Box 26
SE-363 03 Lammhult
Sweden

+46 472 26 95 00
info@lammhults.se
lammhults.se